

17

WE GUARANTEE

That each and every article in this catalog is exactly as described and illustrated.

We guarantee that any article purchased from us will satisfy you perfectly; that it will give the service you have a right to expect; that it represents full value for the price you pay.

If for any reason whatever you are dissatisfied with any article purchased from us we expect you to return it to us at our expense. We will then exchange it for exactly what you want, or will return your money, including any transportation charges you have paid.

Sears, Roebuck and Co.
Chicago

How to Measure for Men's, Women's and Children's Wearing Apparel

A page of instructions showing how to measure and what measurements to give, tables of sizes and other necessary information for all the various kinds of Wearing Apparel—Clothing, Working Garments, Hats, Gloves, Underwear and Hosiery. This page must not be used as an order blank but as a page for information only.

Measurements for Men's Suits or Overcoats and Boys' or Youths' Long Pants Suits or Overcoats.



Height	Weight	Age
COAT OR OVERCOAT		
Be sure to state suit or overcoat style number.		
Stand in your natural way, breathe regularly, and don't expand chest; also take everything bulky out of your pockets.		
Breast —Around body at breast, close up under arms at 1, snug but not tight. Tape should be over shoulder blades at the back (measure over vest only).....		
Waist —All around body at waist at 2. Waist line is just above hip bones. Always feel sides for location of hip bones (measure over vest only).....		
Sleeve —Take sleeve measurements with your coat on. From middle of back at 3 to elbow at 4.....		
Sleeve —From middle of back at 3 to wrist joint at 5, giving full length of arm.....		
VEST.		
(These measurements must be taken over the vest.)		
Breast —Around the body at breast, close up under arms at 1, snug but not tight. Tape should be over the shoulder blades at back (measure over vest only).....		
Waist —All around body at waist at 2. Waist line is just above hip bones. Always feel sides for location of hip bones (measure over vest only).....		
PANTS.		
(Now turn up your vest.)		
Now stand erect and draw pants waist up in the overcoat.....		
Waist —All around body at waist over pants at 4. Waist line is just above hip bones. Always feel sides for location of hip bones.....		
Inseam —From crotch up to heel seam of shoe at 8.....		

NECESSARY INFORMATION FOR BOYS' CLOTHING.

TWO-PIECE OR THREE-PIECE KNEE PANTS SUITS, OVERCOATS, LITTLE FELLOWS' SUITS OR OVERCOATS—Simply state age and say whether the boy is large, small or of average size for his age.

MEASUREMENTS FOR MEN'S AND YOUTHS' CLOTHING.

SUITS. State all the measurements for coat, vest and pants as shown on the form to the left.	VESTS. State breast and waist measurements.	MACKINTOSHES, RUBBER COATS, HUNTING CLOTHING, DUCK, FUR AND LEATHER COATS AND OTHER WORKING COATS. State breast measurement. In addition to the foregoing measurements specify state height, weight and age.
COATS. State breast, waist and sleeve measurements.	PANTS. State waist measurement and length of inseam.	
OVERCOATS. State breast, waist and sleeve measurements.	OVERALLS AND WORKING PANTS, HUNTING PANTS. State waist measure and length of inseam.	

MEASUREMENTS FOR MEN'S UNDERWEAR.

UNDERSHIRTS. State breast measure.	UNION SUITS. State breast measure; also measurement from center of right shoulder down the front through crotch and up the back around to starting point (center of right shoulder) thus giving trunk measure.
DRAWERS. State waist measure.	

MEN'S SOCKS—State Size of Socks.

Size of shoe.....	5 1/2-6	6 1/2-7	7 1/2-8	8 1/2-9	9 1/2-10	10 1/2-11	11
Size of sock.....	5 1/2	6 1/2	7 1/2	8 1/2	9 1/2	10 1/2	11

MEASUREMENTS FOR MEN'S AND BOYS' HATS.

Measure your head as here illustrated and send us either this measurement in inches or compare the number of inches your head measures with this scale of hat sizes and send us the hat size you wear.

Hat Size	7 1/2	8	8 1/2	9	9 1/2	10	10 1/2	11
Men's Sizes, 6 3/4 to 7 1/4	7 1/2	8	8 1/2	9	9 1/2	10	10 1/2	11
Men's Sizes, 6 3/4 to 7 1/4	7 1/2	8	8 1/2	9	9 1/2	10	10 1/2	11

MEASUREMENTS FOR MEN'S OR LADIES' GLOVES.

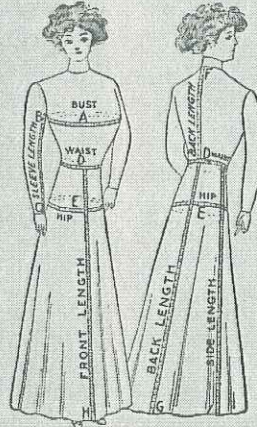
HOLD HAND OUT FLAT WITH FINGERS TOUCHING, THUMB RAISED; draw tape close but not tight, as shown in illustration (do not include thumb). The number of inches that your hand measures around at the knuckles is the correct size of your gloves. ALWAYS STATE SIZE AND COLOR WANTED.

Sizes for gloves are as follows:

Ladies' Sizes in Fabric, Knitted Yarn and Fleece Lined Kid Gloves: 6, 6 1/2, 7, 7 1/2, 8, 8 1/2.
Ladies' Sizes in Unlined Kid Gloves: 5 1/2, 6, 6 1/2, 6 3/4, 7, 7 1/2, 7 3/4, 8, 8 1/2.
Men's Sizes: 7 1/2, 7 3/4, 8, 8 1/2, 8 3/4, 9, 9 1/2, 10, 10 1/2.

Measurement Form for Ladies' and Misses' Tailored Suits, Cloaks, Skirts, Dresses, Waists and Capes.

First, tie a tape or cord around your waist in order that you may properly locate the natural waist line. This is important.
Second, be sure that your tape line is accurate. Then measure over a tight fitting waist or blouse, making no allowance for seams, according to the following directions:



Height	Weight	Age
Measurements for Coat, Cloak, Waist, Dressing Sacque, Etc.		
BUST MEASURE —Measure all around body as per line marked A, over the fullest part of bust, under-neath arms and well up on the shoulder blades at back. Don't take this measure just across the front, but take it all around body.....		
WAIST MEASURE —Measure all around body at hips as per line marked B. This measurement should be taken from waist to within 2 or 3 inches from the floor for ladies' skirts, and 8 to 10 inches from the floor for misses' skirts. Do not take measure from waist line to the floor, as this makes the skirt entirely too long.....		
FRONT LENGTH OF SKIRT —Measure from waist line D down the front of skirt to H. This measurement should be taken from waist to within 2 or 3 inches from the floor for ladies' skirts, and 8 to 10 inches from the floor for misses' skirts. Do not take measure from waist line to the floor, as this makes the skirt entirely too long.....		
BACK LENGTH OF SKIRT —Measure from waist line D down back of skirt to H.....		
SLEEVE LENGTH —Measure from armpit at B along inside sleeve 2 x m to wrist at C with arm held as shown in illustration.....		
LENGTH OF BACK —Measure from back of neck at F down back to waist line D.....		

IMPORTANT—Always observe the sizes we furnish. We can furnish only the sizes we specify on the various pages of wearing apparel.

MEASUREMENTS FOR LADIES' AND MISSES' CLOTHING.

SUITS. State all the measurements in the form shown to the left.	COATS OR JACKETS (Cloak or Fur). State bust and waist measurements, sleeve length and length in back.	CAPE (Cloak or Fur). State bust measure and number of inches around neck.	SKIRTS. State waist and hip measurements and length of skirt.	Corset Covers. State bust measure.	DRESSING SACQUES, KIMONOS AND ROBES. State bust measure.	MUSLIN DRAWERS. State length and give desired when open and closed styles are wanted.	PETTICOATS AND UNDER-SKIRTS. State length.
WAISTS. State bust measure.	WRAPPERS. State bust measure.	NIGHTGOWNS. State bust measure.					

LADIES' AND MISSES' KNIT UNDERWEAR.

State Size or Bust Measure.

Size of shoe.....	1 and 2	3 and 4	5 and 6	7
Size of foot.....	1 and 2	3 and 4	5 and 6	7

SCALE OF SIZES.

Size 4 for bust 32 inches.	Size 5 for bust 34 inches.	Size 6 for bust 36 inches.	Size 7 for bust 38 inches.	Size 8 for bust 40 inches.	Size 9 for bust 42 inches.	Size 10 for bust 44 inches.	Size 11 for bust 46 inches.	Size 12 for bust 48 inches.
Size 4 for bust 32 inches.	Size 5 for bust 34 inches.	Size 6 for bust 36 inches.	Size 7 for bust 38 inches.	Size 8 for bust 40 inches.	Size 9 for bust 42 inches.	Size 10 for bust 44 inches.	Size 11 for bust 46 inches.	Size 12 for bust 48 inches.

NECESSARY MEASUREMENTS OR INFORMATION FOR GIRLS' CLOTHING.

COATS AND REEFERS. State age and whether large or small for age; also state bust measure.	SWEATERS. State age.	DRAWERS. State age.
FUR SETS. State age.	UNDERSHIRTS. State age.	DRESSES. Read the scale of sizes for each age on the dress pages and order accordingly.

CHILDREN'S AND MISSES' UNDERWEAR.

SCALE OF SIZES.

Size, inches	For Age, Years	Size, inches	For Age, Years	Size, inches	For Age, Years
18	1 to 1 1/2	28	8 to 10	18	1 1/2 to 2
20	1 1/2 to 2	30	10 to 12	20	2 to 4
22	2 to 4	32	12 to 15	22	4 to 6
24	4 to 6	34	15 to 18	24	6 to 8
26	6 to 8	36	18 to 20	26	8 to 10

CHILDREN'S STOCKINGS—State Size of Stockings.

SCALE OF SIZES.

Size of shoe.....	4 1/2	5	5 1/2	6	6 1/2	7	7 1/2	8	8 1/2	9	9 1/2	10
Size of shoe.....	4 1/2	5	5 1/2	6	6 1/2	7	7 1/2	8	8 1/2	9	9 1/2	10

NECESSARY INFORMATION FOR INFANTS' CLOTHING.

CLOAKS. State age and length desired.	BONNETS AND HOODS. State age of child and state whether large or small head.
---	--

INFANTS' STOCKINGS—State Size of Stockings.

SCALE OF SIZES.

Size of shoe.....	1 and 2	3	4	5	6	7
Size of shoe.....	1 and 2	3	4	5	6	7

INFANTS' VESTS AND SHIRTS—State Size.

SCALE OF SIZES.

Size, inches	1	2	3	4	5	6	7
Size, inches	1	2	3	4	5	6	7
To fit infants, age.....	1 to 3 months	3 to 6 months	6 to 9 months	9 to 12 months	1 to 2 years	2 to 3 years	3 to 4 years

SEARS, ROEBUCK AND CO., CHICAGO, ILL. Our Grocery Business Grows Tremendously. Why? OUR Groceries Are DIFFERENT.

This Page Must Not Be Used as an Order Blank but as a Page for Information Only.

Brief Index of Lines of Merchandise

FOR ITEMIZED INDEX SEE FOLLOWING PAGES 2 TO 16

If you wish to refer to any particular line of merchandise use the brief alphabetically arranged index on this page. It is usually easy to find any article after locating the general

line, as the headings, illustrations and descriptions readily direct you to the various items you want. To find any particular item refer to complete itemized index on following pages 2 to 16.

PAGE	PAGE	PAGE	PAGE
Acetylene Gas Plants.....1178	Cooking and Kitchen Utensils.....416, 1022-1030	Infants' Wear.....81, 230-242, 244, 255, 365, 377	Rubber Footwear.....391-399
Agricultural Implements.....514-518, 538, 939, 1031-1051, 1051-1057, 1088-1123, 1134-1137, 1131-1134, 1174-1180, 1184-1191, 1211-1212	Corsets, Hose Supporters, Belts, Hand Bags, Purse, 97, 130-135, 833	Invalid Chairs.....513	Rubber Hose.....1031, 1061
Amputation.....909-912	Cream Separators.....1031, 1131-1144	Irrigation Outfits.....1179	Rugs and Carpets.....122-143
Athletic Goods.....202, 375, 394, 920-925	Cutlery.....816-853, 861-874	Jewelry.....776-845	Saddles.....1215, 1319-1222
Automobiles.....1213	Cutters, Sleighs—Write for Prices.	Laces, Embroidery, Ribbons.....80-85, 93-95	Skates, Fireproof.....1010-1011
Automobile Clothing and Furnishings.....90-93, 121, 139, 198, 202, 315, 321, 345	Dairy Supplies.....416, 763, 1031, 1131-1144	Lace Curtains, Drapery.....411-463, 467-475	Scales, Household and Counter.....1030
Automobile Sundries.....547-550, 771-772, 875, 1153, 1231	Diamonds.....825-830	Lamps.....411-463, 467-475	Scales, Platform, Wagon.....1126-1127
Babies' Supplies.....91, 230-242, 244, 255, 365, 377	Draperies.....101-104, 414-462, 467-470	Laundry Supplies.....418-421	Scarfs and Veils.....50-92, 203
Baby Carriages.....652-656	Drawing Instruments and Materials.....764-765	Lighting Rods.....772, 992-993, 1013-1020	School Furniture.....1130
Band Instruments.....702-709	Drugs and Toilet Articles.....33-36, 41, 49, 62-89, 92	Linings, Dress.....1108	Shawls.....657-684
Barbers' Supplies.....46, 200, 485-490, 492-495, 870-874	Dry Goods.....177-195, 503-512	Linoleum, Oilcloth.....32, 410-412	Sheep Shearing Machines.....518
Baseball and Football Goods.....922-925	Duck Clothing, Men's—Write for Working Clothing Catalog.	Lumber.....1239	Shoes, Boots.....35, 56, 58, 72-78, 92-93
Bathers' Supplies.....202, 925	Electrical Goods.....420, 476, 762-763, 770-775, 1017, 1019	Lumbermen's Supplies.....253, 396, 1054-1055, 1058-1059	Silks.....35, 56, 58, 72-78, 92-93
Beds, Mattresses, Springs, Pillows.....604-607, 619-635, 937	Embroideries, Fancy Goods and Needlework.....81-89, 94-95, 97-105	Mantels, Consoles, Fireplaces.....1145	Silverware.....533, 813, 816-858
Bedding—Blankets, Bedspreads, Comforters, Quilts, Sheets, Pillow Cases.....29, 31-32, 41, 50-51, 101-102, 457, 473-475	Engines, Gasoline, Farm, Shop.....1184-1191	Masons' and Bricklayers' Tools.....1036, 1056, 1079	Sleighs, Outfitters—Write for Prices.
Bee Keepers' Supplies.....1123	Engines, Steam—Write for Prices.	Mill and Factory Supplies.....547-550, 1058-1061, 1114, 1181-1191	Sporting Goods.....889-911
Bells, Door.....171, 1032-1033	Fancy Goods, Art Needle Work.....91-95, 97-105	Mill Work.....1145-1153	Spraying Apparatus.....443, 538, 1173-1180
Bells, Schoolhouse, Church.....1114	Farm and Garden Tools.....514, 517-518, 1033-1041, 1051-1057, 1231-1232	Millinery.....90-91, 93, 107-127	Spraying Materials.....470, 482, 484
Bells, Stock and Farm.....1033, 1231	Fencing Wire.....1118-1122, 1124	Monuments, Tombstones.....1125	Stalonyery.....956-958
Bicycles and Supplies.....377-388	Fencing, Wrought Steel.....1124	Motocycles.....875	Stoves.....859-1005, 1183
Binder Twine. (Write for Binder Twine Price List.)	Fireless Cookers.....1022	Musical Instruments.....685-709, 714-733, 738	Stove Repairs for our Stoves—Write for Stove Repair Price List.
Blacksmiths' Tools and Supplies.....1040-1043, 1057, 1059, 1065-1073	Fishing Tackle.....928-934, 936-937	Muslin Wear, Ladies, Girls' and Infants'.....203-213, 223-229, 236-239, 242	Stamp Pullers.....1114
Boats.....934	Floor Tile.....1145	Neckwear.....395, 542-546, 777, 1036, 1050-1057, 1062-1087, 1172-1173, 1231-1232	Sweaters.....330
Boats and Stationery.....942-953	Fountain Pens, Cheap.....957	Neckwear, Ladies, Girls' and Infants'.....203-213, 223-229, 236-239, 242	Swimming Goods.....202, 925
Books, Shoes.....352-393, 921	Footwear, High Grade.....844-845	Notions.....91-95, 123, 331-335	Table Covers and Linens.....37-13, 102-101, 472
Buggies and Surreys.....1192-1210	Frames, Men's, Women's and Children's—Write for Fur Catalog.	Office Furniture and Equipment.....813-845, 859-860, 956-958, 1019-1011	Talking Machines, Records.....732-738
Builders' Hardware.....1050-1053, 1153-1159	Furnishing Goods, Men's and Boys'.....253, 255-262, 322-346	Optical Goods.....763, 766-769	Telephone Instruments.....775
Building Materials, Mill Work, Plans, Etc.....1145-1155, 1233-1239	Furniture.....551-651, 927, 937, 1130	Paints, Oils, Varnishes, Patenting and Paperhanging Supplies.....525-550	Telephone Supplies.....710-711
Butchers' Supplies.....290, 855-896, 1023, 1028, 1030, 1112, 1210	Gas and Electric Fixtures.....429, 476	Photographs, Records.....732-738	Telescopes.....707-708
Cameras and Photo Supplies.....739-761, 939	Glassware.....309, 414-415, 418-421, 568	Photographic Goods.....739-761, 939	Tents, Awnings and Camp Supplies.....919, 927, 937-939
Carpenters' Tools and Supplies.....1074-1087	Gloves, Mittens.....138-140, 339, 341-346	Pianos and Organs.....714-731	Thermometers, Compasses.....769
Carpets and Rugs.....422-443	Groceries.....1128-1129	Pictures.....496	Tile, Floor and Wall.....1115
Cement Block Machines, Molds and Cement Workers' Tools.....1056, 1160-1161	Guns, Rifles, Revolvers.....889-909	Pipes, Smoking.....940-941	Tinware.....1019-1020, 1022, 1027-1031
Children's Headwear.....112, 116, 127, 228, 230-231, 297, 305, 310, 339	Hair Goods, Ornaments.....128-129, 136-137, 491, 834-835, 837	Plans, Building.....1116-1117	Toilet Ware.....417, 1031, 1024-1029
China, Crockery, Glassware.....399-421	Hamocks, Swings.....568, 926-927	Plumbing Supplies.....1102-1178, 1182-1183	Tombstones, Monuments.....1125
Clocks.....695, 772, 859-863	Handkerchiefs.....96, 333, 338	Portable Houses.....1163	Traps and Beroys.....814-815
Clothing, Boys', Youths'.....291-312, 316-318, 913	Harness, Saddles, Horse Covers, Lap Robes, Saddlery and Stable Supplies.....618, 1214-1237	Post Card Projectors.....702-763	Trunks, Traveling Bags.....817-851
Clothing, Hunting.....917-918	Hats, Caps, Men's and Boys'.....112, 297, 305, 310, 339-343	Poultry Raisers' Supplies.....180, 515, 1032-1033, 1114-1115, 1120	Trusses.....510-511
Clothing, Ladies', Girls' and Infants' Ready to Wear.....142-242	Hay Tools.....1035, 1037, 1105	Pumps.....1174-1180	Umbrellas.....166
Clothing, Ladies' Made to Order.....141	Heating Plants, Steam, Hot Water, Warm Air.....1181-1183	Pyrography.....503	Underwear, Knif.....211-249, 259-262
Clothing, Men's Made to Order.....263-264	Horse Clipping Machines.....518	Raincoats, Ladies', Girls'.....189, 158	Underwear, Muslin, Petticoats, Aprons, House Dresses, Women's, Girls', Infants'.....203-221, 225-229, 236-242
Clothing, Men's Ready Made.....265-290, 313-321	Hose, Rubber.....1034, 1061	Raincoats, Men's.....286-287, 319-321	Vacuum Cleaners.....1021
Clothing, Men's Working.....289-290, 316-318, 320-321	Hosiery.....250-253, 395	Raincoats, Young Men's, Boys'.....318	Vehicles, Buggies, Wagons.....1192-1212
	Hospital and Hotel Supplies.....31, 37-43, 45-47, 399, 622-635	Razors and Shaving Supplies.....46, 290, 485-490, 492-495, 870-874	Velvet and Velvetens.....79
	Incubators and Brooders.....1115	Records, Phonograph.....731-738	Veterinary Goods.....514-517
		Refrigerators, Ice Chests.....571-575	Wagons, Business, Farm and Spring.....1209-1212
		Road Orders, Scrapers.....1113	Wagons, Toy.....876
		Roofing.....536, 1152, 1164-1169	Wagon and Carriage Hardware.....1011-1049
			Wall Paper.....519-524
			Washing Machines.....1013-1017
			Watches and Chains.....776-814
			Water Supply Outfits.....1116-1117, 1178-1179, 1189
			Windmills and Tanks.....1116-1117
			Window Shades.....464-466
			Wire Fencing.....1118-1122, 1124
			Wood Working Machinery.....1059, 1051, 1085
			Wringers, Clothes.....1018

2c TO 12c ITEMS ARE ON PAGES 19 TO 28

SIMPLE RULES FOR ORDERING

TO FIND WHAT YOU WANT TO BUY, refer to Brief Index above or to Itemized Index on pages 2 to 16. USE OUR ORDER BLANK, IF YOU HAVE ONE. If you haven't one, use any kind of plain paper. TELL US IN YOUR OWN WAY WHAT YOU WANT, always giving, if possible, the catalog number of each article, the price, and also the size and color, where these are necessary. ENCLOSE IN THE LETTER the proper amount of money in the form of a postoffice money order, which you can buy at the postoffice, or an express money order, which you can buy from any express agent, or a draft, which you can buy at any bank, or you can put the money itself in a letter and take it to the postoffice and tell your postmaster that you want him to register it to us. If you have a checking account Do not fail to give size, color, weight, etc., if required, when writing your order.

at a bank, you may, if you prefer, send us your personal check. IF YOU LIVE ON A RURAL MAIL ROUTE, just give the letter and the money to the mail carrier and ask him to buy a money order at the postoffice for you and to put it in the envelope with your order and mail it to us. DON'T BE AFRAID YOU WILL MAKE A MISTAKE IN MAKING OUT THE ORDER. We receive hundreds of orders every day from young and old, who never before sent away orders for goods. We are accustomed to handling all kinds of orders. WRITE US IN YOUR OWN WAY, IN ANY LANGUAGE. We have translators who read all languages. Don't worry if you think your writing is poor. We will be able to read it and your goods will be promptly sent.

IF THERE IS ANY OTHER INFORMATION YOU DESIRE, such as methods of shipping, postage, express or freight rates, you will undoubtedly find it by referring to pages 17 and 18 of this catalog.

Visit Us When You Come to Chicago. We'll Show You Through Our Buildings. SEARS, ROEBUCK AND CO., CHICAGO, ILL.

MOSQUITO AND BEE HEAD NET
 No. 6H9100 To be worn over the hat or cap. Made of good tartan. Fitted with four light steel springs, bottom weighted with shot so as to set close to shoulders. Can be folded up and put in an ordinary hat pocket. Shipping weight, 5 ounces. Price, complete, 35c.

Kenny's Mosquito Chaser.
 An effective, harmless, pleasant smelling preventive against mosquitoes and other insects. Made of pure ingredients free from poisons or acids, according to a government formula. A few drops on the hands and face or on a towel hung over the head of bed will keep away mosquitoes and other insects. The most effective preparation of its kind on the market, sold everywhere by all grocers and druggists. Put up in 1-ounce bottles. Shipping weight, 5 ounces. No. 6H9108 Kenny's Malaria Chaser. Price, per dozen, 1.00.

Keystone Fish Stringer.
 No. 6H9036 Brass needle at one end to string fish and a ring at the other end to loop the fish. The fish stringer is 6 feet long. Shipping weight, 4 ounces. Price, complete, 1.10.

Chain Fish Stringer.
 Stronglink, heavy metal plated, strong and durable. Will hold 100 pounds of fish and not break. Length, 4 feet. Shipping weight, 3 ounces. No. 6H9038 Price, complete, 9c.

Minnow Net.
 No. 6H9091 Solid round ring, 14x14 inches, fitted with 20-inch net, top mesh 1/2-inch, bottom mesh 3/8-inch. Can be used for other landing large fish or as minnow net. Fitted with 4-foot twisted handle. Shipping weight, 27 ounces. Price, complete, 68c.

Steel Pliers.
 No. 6H9101 Length, 4 inches. Shipping weight, 3 ounces. Price, complete, 9c.

Acino Spring Balance.
 No. 6H9150 Weighs from 1 to 15 pounds. Made of brass with 2 brass scales with tare allowance. Shipping weight, 2 ounces. Price, complete, 2.10.

The Superior Folding Net.
 Complete with net and handle. Can be taken apart in a moment's time, is very light and strong, being made of the best tempered steel. No parts to get lost; the can be folded without marring the net. Put up in neat, parcelled cloth bag.
 No. 6H9095 No. 1 Edge, 12x14x18 inches, mounted with a 20-inch square bottom, lined waterproof net, 1/2-inch mesh, fitted with 4-foot joint handle, nicely finished. Shipping weight, 20 ounces. Price, complete, 11.24.

Trout Baskets With Metal Clasp.
 Our baskets are made from select French willow, very strong and light.
 No. 6H9103 Capacity, 10 pounds, measures 7x12 inches on back. Shipping weight, 13 ounces. Price, complete, .95c.
 No. 6H9104 Capacity, 12 pounds, measuring 8x12 inches on back. Shipping weight, 20 ounces. Price, complete, 1.12.

Patent Trout Basket Strap.
 No. 6H9109 The best made; made of walking and leather; leaves the arms free. Shipping weight, 4 ounces. Price, complete, 20c.

Our Keep Alive Nets.
 No. 6H9088 These nets are made with wire hoops and are collapsible and take up very little room. As excellent thing to keep fish alive and fresh when caught. Shipping weight, 14 to 18 ounces.
 Price, 10 inches diameter, 25c.
 Price, 12 inches diameter, 30c.
 Price, 14 inches diameter, 35c.

Foard's No. 2 Disgorger.
 No. 6H9146 Simple end, for extracting fish hooks when too far in mouth of fish and cannot be taken out by hand. Shipping weight, 2 ounces. Price, complete, 6c.
 No. 6H9147 Double End Aluminum Disgorger. Very light, will not rust. Shipping weight, 3 ounces. Price, complete, 15c.

Minnow Dip Nets.
 No. 6H9089 Made of No. 20 six-ply Sea Island cotton, 3/16-inch mesh bottom, 3/8-inch mesh top; superior in strength and durability to linen nets and for less expensive. Price for nets only; do not include frames. Shipping weight, 2 to 6 ounces.
 16 inches deep, 17c 30 inches deep, 30.41
 18 inches deep, 21c 36 inches deep, .50
 20 inches deep, 25c 45 inches deep, .85
 24 inches deep, 31c 60 inches deep, 1.20

Linen Landing Nets.
 No. 6H9090 Price is for netting only, and does not include frame. Made in 31-inch mesh only. For landing large fish. Shipping weight, 2 ounces.
 Depth, 50 24 30
 Price, complete, 15c 20c 30c

Folding Catch All Minnow Net.
 No. 6H9092 This net has a steel frame 2 1/2 feet square. This frame can be folded in one moment's time; when folded occupies a space 2 1/2 feet long by 2 inches square. The net itself is heavy good canvas netting, 3/16 inch mesh, reinforced at corners. Each with a brass ring at each corner to attach to frame. This net is put up with handle; frame made of a large ring to which a handle or rope can be attached. Shipping weight, 28 ounces. Price, complete with handle, 95c.

THE CHARLES FISH TRAP.
 \$1.60 STANDARD SIZE
 CARRIED IN STOCK SHIPPED PROMPTLY
 No. 6H9756 This Fish Trap is made on the order of a fyke net, and of extra heavy woven netting, 3/16 inch square mesh, the loop at mouth of trap is 14 inches in diameter, the body of trap is 3 feet long, the wings measure 18 feet from end to end. This net can be set in any stream with stakes, and is an excellent trap for capturing minnows and small fish. Shipping weight, 28 ounces. Price, complete with handle, \$1.60.

Superior Cotton Trot Line.
 Cotton Trot Lines, to use as set lines, top and bottom lines on small nets; in foot banks, air launch connected or set. Best quality. Sold in any quantity at rates. Mention number when ordering.
 NOTICE—We guarantee our trot lines run full 50 feet to the bank. Ends always meet our price, other dealers sometimes 75 to 80-foot banks for 50 feet. Make your line and see that you get what you are paying for.
 No. 6H9900 Superior Cotton Trot Line. Price, per Doz. Black or 600 Ft. 10.29
 No. 12 12 10.29
 No. 16 16 10.29
 No. 20 20 10.29
 No. 24 24 10.29
 No. 28 28 10.29
 No. 32 32 10.29
 No. 36 36 10.29
 No. 40 40 10.29
 No. 44 44 10.29
 No. 48 48 10.29
 No. 52 52 10.29
 No. 56 56 10.29
 No. 60 60 10.29
 No. 64 64 10.29
 No. 68 68 10.29
 No. 72 72 10.29
 No. 76 76 10.29
 No. 80 80 10.29
 No. 84 84 10.29
 No. 88 88 10.29
 No. 92 92 10.29
 No. 96 96 10.29
 No. 100 100 10.29
 No. 104 104 10.29
 No. 108 108 10.29
 No. 112 112 10.29
 No. 116 116 10.29
 No. 120 120 10.29
 No. 124 124 10.29
 No. 128 128 10.29
 No. 132 132 10.29
 No. 136 136 10.29
 No. 140 140 10.29
 No. 144 144 10.29
 No. 148 148 10.29
 No. 152 152 10.29
 No. 156 156 10.29
 No. 160 160 10.29
 No. 164 164 10.29
 No. 168 168 10.29
 No. 172 172 10.29
 No. 176 176 10.29
 No. 180 180 10.29
 No. 184 184 10.29
 No. 188 188 10.29
 No. 192 192 10.29
 No. 196 196 10.29
 No. 200 200 10.29

Superior Square Cotton Dip Net.
 No. 6H9153 These nets are made of No. 20 six-ply Sea Island cotton, 3/16-inch mesh bottom, 3/8-inch mesh top; superior in strength and durability to linen nets and for less expensive. Price for nets only; do not include frames. Shipping weight, 2 to 6 ounces.
 16 inches deep, 17c 30 inches deep, 30.41
 18 inches deep, 21c 36 inches deep, .50
 20 inches deep, 25c 45 inches deep, .85
 24 inches deep, 31c 60 inches deep, 1.20

Set Line Snaps.
 No. 6H9153 These are made of No. 20 six-ply Sea Island cotton, 3/16-inch mesh bottom, 3/8-inch mesh top; superior in strength and durability to linen nets and for less expensive. Price for nets only; do not include frames. Shipping weight, 2 to 6 ounces.
 16 inches deep, 17c 30 inches deep, 30.41
 18 inches deep, 21c 36 inches deep, .50
 20 inches deep, 25c 45 inches deep, .85
 24 inches deep, 31c 60 inches deep, 1.20

BOATS AND SUPPLIES. Note—Freight Rate on Boats Is Four Times First Class.

Flat Bottom Fishing Boat.

The best fishing boats made. Absolutely safe, comfortable and easily managed. Made of selected seasoned material by expert boat builders. These boats are made for us under contract and are sold by us exclusively. There are several flat bottom boats on the market, but we claim ours are far superior in design, workmanship and material. They are made of the best material, the sides are made of one-piece 3/4-inch cypress, oak stem, bottom boards laid crosswise, caulked with cotton. Keel strip of yellow pine, thoroughly fastened through each cross string. The gunwale, cleats and uprights are of yellow pine or spruce. Inside of boat is finished with two coats of slate color lead paint; outside with two coats of the best green marine paint. Fittings: One pair copper tipped oars, fitted with oak plates and North River carlocks. The 14-foot, 18-foot and 20-foot boats are fitted with one pair of carlocks and two pair of sockets. Shipped from factory in Chicago.

Catalog No.	Length, Feet	Width, Beam, Inches	Height, Inches	No. Seats	Weight, Pounds	Price
6H9213 1/2	12	40	15	3	160	\$16.00
6H9213 2/3	14	42	15	4	170	18.00
6H9213 1	15	44	15	4	180	19.25
6H9213 1 1/2	16	44	15	4	205	18.48

15-Foot Smooth Skin Double Pointer Boat.

A handsome, safe, easy rowing boat at a very low price. The body of this boat is made of narrow strips of cedar or cypress, edge fastened, making a smooth surface inside and out. The ribs are of selected oak, steam bent. The floor boards are of cedar or cypress, screw fastened. Painted inside with two coats of slate color lead paint; outside with two coats of best green marine paint. The gunwale, inwales, breast hooks and seats are fitted and finished with three coats of the best marine varnish. Rattles: One pair of selected copper tipped oars, fitted with oak plates and North River carlocks, two pair galvanized sockets and galvanized stem band, painter ring with painter. A high grade, easy rowing boat. Could not be purchased elsewhere for less than \$30.00. Shipped from factory in Chicago.

Catalog No.	Length, Feet	Width, Beam, Inches	No. Seats	Weight, Pounds	Price
6H9206 1/2	15	42	4	185	\$22.75

Extra pair oars, same as furnished with above boat, complete with attached carlocks, \$1.50

Square Stern Clinker Row Boat.

None better. Made of the best material by expert builders. A strong, handsome, easy rowing boat of white pine, stem, keel and transom of solid seasoned oak. The bottom is of cypress and the plating or siding, of cedar; lap strakes thoroughly fitted and screw fastened; ribs of oak steam bent to place; floor boards of cedar or cypress, screw fastened. Finish: The inside painted with three coats of the best lead paint; outside with three coats of marine paint, except three top strakes, which have three coats of varnish. The gunwale, inwales, breast hooks, seats and floor are fitted and finished with three coats of the best marine varnish. Fittings: One pair of varnish copper tipped oars, fitted with oak plates, galvanized North River carlocks, two pair galvanized sockets, galvanized head seat braces, painter ring and pedaler. Shipped from factory in Chicago.

Catalog No.	Length, Feet	Width, Beam, Inches	No. Seats	Weight, Pounds	Price
6H9217 1/2	14	42	4	175	\$26.00
6H9218 1/2	16	44	4	179	30.00

Extra pair oars, same as furnished with above boat, complete, \$1.50

Northern Fir Copper Tipped Oars.
 They weigh but little more than a spruce, have greater uniform strength and are far lighter than ash. They are guaranteed to be selected straight grain, well turned and finished. One pair of 6-foot oars weighs about 5 pounds and a pair of 8-foot oars about 7 pounds. The length given is the length of each oar.
 No. 6H9308 1/2 Length given is the length of each oar.
 Length, 6 ft., 8 ft., 7 ft., 8 ft., 8 ft., 8 ft., 8 ft.
 Price, per pair, .22c 98c \$1.07 \$1.14 \$1.22 \$1.30

Copper Tipped Ash Oars.
 Our Ash Oars are made of the best selected straight grain stock. We do not handle second, or what is known as cull, we handle only selected oars. One pair of 6-foot oars weighs about 5 pounds and a pair of 8-foot oars about 7 pounds. The length given is the length of each oar.
 No. 6H9311 1/2 Copper Tipped.
 Length, 6 ft., 7 ft., 7 ft., 8 ft., 8 ft., 8 ft., 8 ft.
 Price, per pair, \$1.06 \$1.28 \$1.42 \$1.50

Selected Copper Tipped Spruce Oars.
 No. 6H9313 1/2 Lighter than ash oars and very strong; copper tipped.
 Weight, pounds, 3 1/2 5 1/2 6 1/2
 Length, feet, 6 1/2 7 1/2 8 1/2 8 1/2
 Price, per pair, \$1.12 \$1.32 \$1.48

Spruce Paddle, 90 Cents.
 No. 6H9314 1/2 Single, straight grained, first made. Weight, 1 1/2 pounds. Price, each, 90c.
 Northern fir copper tipped push paddles, about 10 feet long, nicely varnished; properly shaped ball end. Weight, 3 1/2 pounds. Shipping weight, about 4 pounds.
 No. 6H9316 Price, \$1.20

Oarlocks.
 No. 6H9424 Galvanized malleable iron, 2 inches between horns. Weight, per pair, about 1 1/2 pounds.
 Price, per pair, 15c

Safety Oarlocks, 32 Cents.
 No. 6H9426 Fitted with a spring, which with the shock of the horns makes it impossible to pull the horns out of the socket accidentally. Can be used with or without pin.
 Made of galvanized malleable iron, 2 inches between horns. Weight, per pair, 2 pounds. Price, per pair, 32c

Oar Plates.
 Will double the serviceability of your oars and prevent lock pins from wearing large holes in the oars. Stamped from heavy galvanized steel galvanized and shaped to fit the oar. Easily attached with screws. Weight, per set of four, about 10 ounces.
 No. 6H9228 Oar Plates. Price, per set of four plates 15c

Petro Pitch, 89 Cents.
 No. 6H10461 An excellent calling for boats, canoes, launches, tanks and troughs. Far superior to oakum, tar or ordinary pitch. Simple to use; simply pour into the seams or openings and allow to dry. Shipping weight, 2 1/2 pounds. Price, per quart, 89c

Life Preserver.
 No. 6H9420 1/2 Life made of sour milk curd; to be worn around body. One of the best on the market; safe and durable. The government inspects and stamps on each one. Weight 7 pounds. Price, \$1.10

Fit Your Boat With a Motorgo

THIRTY DAYS' TRIAL—GUARANTEED FOR LIFE

Motorgo Marine Engines have attained a nation wide reputation for their simplicity, reliability and power.

We guarantee the Motorgo Marine Engines to be equal in every way to any marine engine you can buy regardless of make or price.

There are other good marine engines for sale, but none better, and those that are not to the Motorgo will cost you twice our price.

The material, workmanship, finish and equipment on the Motorgo Marine Engines are of high grade in every respect. We defy any manufacturer to produce a better engine at any price.

Motorgo Marine Engines develop more than their rated horse power and will give you as much, if not more, speed in your boat than any marine engine of equal rating.

Buy your marine engine where you know you will be treated properly. We live up to our guarantee and trial offer to the letter.

What We Guarantee

We guarantee every Motorgo Marine Engine to be absolutely perfect in every respect and to be equal in every way to any marine engine you can buy, material, construction, equipment, power and finish considered. We will replace at any time any part giving out due to defect in material or workmanship. We guarantee that you will be entirely satisfied with your purchase, or if you are not, we will send you back your money and any freight charges you have paid.

Try a Motorgo Marine Engine in Your Boat Thirty Days at Our Expense

This is no idle offer just to get your order but is a frank statement of the confidence we have in the Motorgo Marine Engines. We only ask that you give the Motorgo a chance to prove its worth to you. Send us your order with the money for the size you want and we will ship the engine immediately. You can put it in your boat, try it thirty days before you decide to keep it. If you don't want it, we don't want you to keep it. Compare the engine with others in your neighborhood as to material, construction, power, equipment and finish. If you do not feel that the Motorgo is as good, if not better, than any other marine engine on the market, regardless of price, if you are not perfectly satisfied in every way, you may return the engine and we will send you back every dollar paid out, the price of the engine and freight charges.

What We Furnish With Motorgo Marine Engines

The 2½-horse power engines are equipped with Lankehlmer mixing valve; the 3, 5, 6 and 12-horse power engines with Schebler carburetor. Each engine is furnished with oiler, grease cups, drain cock for cylinder, priming cups, inspection port, crank case, thrust bearing, upright gear timer and plunger pump (except the 2-horse power, which has lever timer; and the 12-horse power, which has a gear driven pump). Each engine is furnished with spark coil and spark plugs, wiring with terminals, fire dry cable, with connectors, switch, expansion chamber, 6 feet of shafting, two-blade bronze speed propeller (woodless if desired), bronze stuffing box, one lb. of cylinder oil, one box of grease and complete book of instructions.

We do not recommend or guarantee these engines for stationary work, as they are designed for use in a boat. If purchased for stationary work we cannot accept their return if they do not prove satisfactory.

Horse Power	Bore, Inches	Stroke, Inches	Speed, R. P. M.	Crank Shaft, Inches	Propeller Shaft, Inches	Propeller Diameter, Inches	Blades	Pitch, Inches	Actual Weight, Pounds	Shipping Weight, Pounds
2½	3¼	3¼	800	1¼	¾	9	12	14	110	185
3	4	4	800	1½	¾	9	14	20	109	240
5	3½	3½	800	1½	¾	10	14	20	150	238
6	3½	3½	800	1½	¾	10	14	20	160	255
8	4	4	800	1¾	1	11	16	21	215	328
12	4½	4½	800	1¾	1¼	13	18	24	320	450

STAND-BY MULTIPLE BATTERY.

Moisture Proof, Cannot Short Circuit, Perfect Ignition

We are at last able to offer you a battery that will give you perfect ignition, maintaining ignition enables almost entirely. We recommend its use with Motorgo Marine Engines. This battery consists of ten dry cells completely covered with paraffin, enclosed in a strong wooden box; special seating process protects the terminals, holds the connections securely and, as the battery is moisture proof, there is absolutely no chance for short circuit. One of these batteries could last you at least a year and will wear from two to five sets of ordinary batteries.

Shipped from factory in Southern Michigan.
 No. 11H256 Stand-By Multiple Battery only. Weight, 25 pounds. \$4.00
 Price.....
 No. 11H256B Stand-By Multiple Battery with any Motorgo in place of regular battery, add to the price of the \$3.30

MOTORGEO REVERSE GEAR.

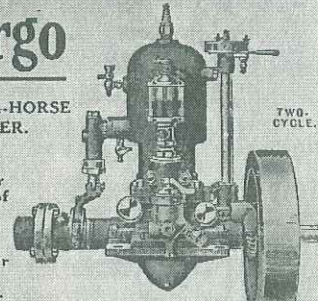
A reverse gear is a great convenience in operating a motor boat, as it gives you perfect control with quick results.

We have been handling this gear for four years and every one who has proven absolutely satisfactory. Shipped on thirty days' trial, covered by our binding guarantee, a perfectly reliable reverse gear, rating 7 1/2 hp. from \$8.00 to \$16.00. We are sure that you will get a reverse gear that will give you any better service than the Motorgo reverse gear of make or price.

Shipped from factory in Southern Michigan.
 No. 11H4720 For marine engines up to 5-horse power. Weight, 10 pounds. \$12.00
 Price.....
 No. 11H4725 For marine engines from 8 to 15-horse power. Weight, 16 pounds. \$17.00
 Price.....
 No. 11H4726 For marine engines from 15 to 30-horse power. Weight, 26 pounds. \$35.00
 Price.....
 No. 11H4727 Couplings for any of the above gears. \$2.00
 Price.....
 NOTE—In ordering couplings for engine you must be sure and give us also of engine shaft and size of propeller shaft.

2½ AND 4-HORSE POWER.

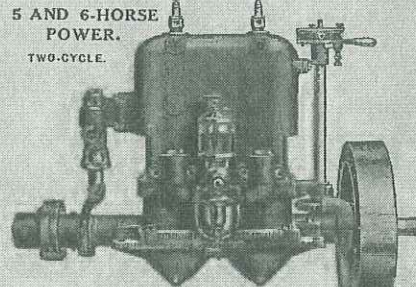
Schebler carburetor in place of mixing valve on 2½-horsepower engine, add \$5.00.



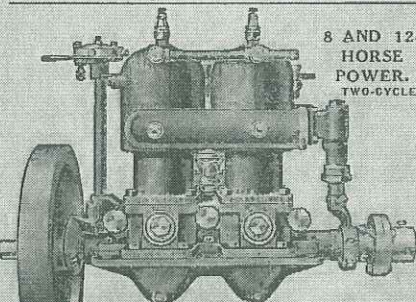
No.	Engine Description	FRESH WATER	SALT WATER
No. 11H3030	2½-Horse Power Engine, with mixing valve and full equipment. Price.....	\$44.35	\$47.15
No. 11H3031	2½-Horse Power Engine, with mixing valve and full equipment, except the propeller, propeller shaft and stuffing box. Price.....		41.85
No. 11H3036	4-Horse Power Engine, with Schebler carburetor and full equipment. Price.....	\$63.95	\$67.75
No. 11H3037	4-Horse Power Engine, with Schebler carburetor and full equipment, except the propeller, propeller shaft and stuffing box. Price.....		61.25

5 AND 6-HORSE POWER.

TWO-CYCLE.



No.	Engine Description	FRESH WATER	SALT WATER
No. 11H3033	5-Horse Power Engine, with Schebler carburetor and full equipment, except the propeller. Price.....	\$85.50	\$89.45
No. 11H3034	5-Horse Power Engine, with Schebler carburetor and full equipment, except the propeller, propeller shaft and stuffing box. Price.....		81.75
No. 11H3027	6-Horse Power Engine, with Schebler carburetor and full equipment. Price.....	\$98.45	\$101.65
No. 11H3028	6-Horse Power Engine, with Schebler carburetor and full equipment, except the propeller, propeller shaft and stuffing box. Price.....		94.75



No.	Engine Description	FRESH WATER	SALT WATER
No. 11H3039	8-Horse Power Engine, with Schebler carburetor and full equipment. Price.....	\$125.65	\$129.75
No. 11H3040	8-Horse Power Engine, with Schebler carburetor and full equipment, except the propeller, propeller shaft and stuffing box. Price.....		119.15
No. 11H3042	12-Horse Power Engine, with Schebler carburetor and full equipment. Price.....	\$168.75	\$172.75
No. 11H3043	12-Horse Power Engine, with Schebler carburetor and full equipment, except the propeller, propeller shaft and stuffing box. Price.....		162.45

FISH NETS SEINES, TRAMMEL NETS, GILL NETS HOOP NETS AND NETTING

WE SELL MORE RIGGED FISH NETS DIRECT TO THE FISHERMEN than any five dealers combined. We catalog the most popular sizes of seines and nets, and in addition, are able to make to order any nets of special specifications.

OUR NETS ARE MADE OF THE BEST MATERIAL, are properly guaranteed to give satisfaction. The twines used in our cotton seines are guaranteed full size, made of the best No. 10 cotton yarn, one-third to one-half heavier than the cotton twines used by other dealers.

QUALITY CONSIDERED and giving due consideration to the fact that our twines are guaranteed full size, that the nettings are properly hung, and that the full quantity of leads and floats are used, our prices are fully 25 per cent below the prices asked by others.

OWING TO THE LARGE NUMBER OF SIZES and the varying demands one season over another for the different sizes, we do not stock the entire line of nets and seines, but make the big majority of them specially to order. Such nets are carried in stock as far as possible in the descriptions covering these particular nets. Gill nets, trammel nets, cotton and gill netting, and all hoop nets over 4 feet in diameter are not carried in stock, but are made especially to order. Therefore, when ordering, allow from four to eight days for us to make and ship the nets.

WE ADVISE anticipating your requirements in fish nets, inasmuch as the bulk of these goods is made to order, and although we have great capacity at our factory, at the same time this capacity, at the

best, is limited, and if you wait until the last moment before ordering gill, seines or nets, your order is apt to come in with hundreds of others and consequently will be subject to some delay which, if you are in need of the nets, might put you to some inconvenience. Understand, we are able to take care of your order at any time, but when the season is at its full height we naturally cannot fill orders as promptly as we are able to when the rush of orders is not so heavy.

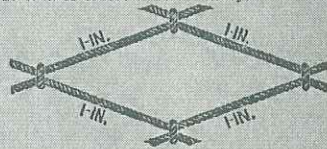


ILLUSTRATION SHOWS A 1-INCH SQUARE MESH.

The following seines are hung with leads and lines ready for use, except hauling lines. Compare our prices and quality with those of other dealers and you will find that we beat them all.

Weight—A 50-foot seine weighs about 20 pounds; a 100-foot seine weighs about 40 pounds; a 150-foot seine weighs about 60 pounds; a 200-foot seine weighs about 80 pounds.

SUPERIOR TAPERED DRAG SEINE

14-THREAD COTTON SEINE TWINE—SQUARE MESH. We have in stock all 1-inch mesh seines up to 72 feet long, and can ship promptly.

Catalog No.	Length, Feet	Depth, Center, Feet	Depth at Ends, Feet	1-Inch	1 1/4-Inch	1 1/2-Inch
6H9685 1/4	20	4	3	\$ 1.00	\$ 0.89	\$ 0.75
6H9686 1/2	30	4	3	1.50	1.35	1.15
6H9687 3/4	40	5	4	2.30	2.00	1.70
6H9688 1	50	5	4	3.10	2.60	2.15
6H9689 1 1/4	60	6	5	3.95	3.46	2.84
6H9690 1 1/2	72	7	6	5.35	4.69	4.00
6H9691 1 3/4	80	8	7	7.40	6.47	5.39
6H9692 2	100	8	7	10.00	8.72	7.25
6H9693 2 1/2	120	10	8	11.22	10.00	8.39
6H9694 3	150	12	10	16.96	14.50	11.90

Allow four to eight days for us to make and ship your seine.

16-THREAD COTTON SEINE TWINE—SQUARE MESH. We have in stock all 1-inch mesh seines up to 72 feet long, and can ship promptly.

Catalog No.	Length, Feet	Depth, Center, Feet	Depth at Ends, Feet	1-Inch	1 1/4-Inch	1 1/2-Inch	2-Inch
6H9699 1/4	20	4	3	\$ 1.20	\$ 1.00	\$ 0.90	\$ 0.80
6H9700 1/2	30	4	3	1.80	1.59	1.30	1.10
6H9701 3/4	40	5	4	2.70	2.40	2.00	1.70
6H9702 1	50	5	4	3.45	3.00	2.55	2.10
6H9703 1 1/4	60	6	5	4.75	4.15	3.40	2.90
6H9704 1 1/2	72	7	6	6.40	5.60	4.70	3.90
6H9705 1 3/4	80	8	7	10.00	8.70	7.25	5.90
6H9706 2	100	8	7	11.75	10.20	8.40	6.90
6H9707 2 1/4	120	10	8	25.00	21.25	17.85	13.90
6H9708 2 1/2	140	12	10	29.95	26.00	21.30	16.90
6H9712 3	200	14	10	42.80	39.00	30.50	24.00

Allow four to eight days for us to make and ship your seine.

Straight Seines "Superior Quality." 3-12-16 TWINE.



Lake or River Straight Drag Seines. Even depth from end to end. Made from Woodbury's best white soft laid twine. Hung with leads and floats, ready for use. Full amount of netting used.

NOTICE—Larger seines of 100 yards and over, require 3/4 inch rope and special rigging at an additional charge of 3/4 cents per yard added to prices quoted below.

No. 6H9716 1/2 12-Thread—Soft Square Mesh.				No. 6H9717 1/2 16-Thread—Soft Square Mesh.			
Mesh, Inches	1-Inch	1 1/4-Inch	1 1/2-Inch	1-Inch	1 1/4-Inch	1 1/2-Inch	2-Inch
8 ft. deep	20c	19c	15c	27c	23c	19c	15c
10 ft. deep	25c	23c	19c	33c	28c	23c	19c
12 ft. deep	30c	27c	22c	40c	33c	27c	20c
14 ft. deep	40c	36c	29c	45c	37c	30c	24c
16 ft. deep	40c	36c	27c	53c	44c	35c	26c

No. 6H9721 1/2 9-Thread Medium Laid Twine.			
Length	Depth	1-Inch Mesh	1 1/4-Inch Mesh
20 feet	4 feet	\$1.40	\$0.90
30 feet	5 feet	2.45	1.40
40 feet	6 feet	3.70	2.35
50 feet	7 feet	5.20	3.30
60 feet	8 feet	6.90	4.25

No. 6H9722 1/2 12-Thread Soft Laid Twine.					
Length	Depth	1-Inch Mesh	1 1/4-Inch Mesh	1 1/2-Inch Mesh	2-Inch Mesh
20 feet	4 feet	\$1.65	\$1.00	\$0.95	\$0.78
30 feet	5 feet	2.90	1.80	1.65	1.30
40 feet	6 feet	4.45	2.72	2.40	2.00
50 feet	7 feet	6.30	3.50	3.50	2.90
60 feet	8 feet	8.40	5.00	4.60	3.50
75 feet	9 feet	9.50	6.30	5.90	4.45

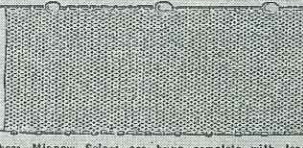
No. 6H9723 1/2 16-Thread Soft Laid Twine.			
Length	Depth	1-Inch Mesh	1 1/4-Inch Mesh
20 feet	4 feet	\$1.30	\$1.13
30 feet	5 feet	2.30	1.95
40 feet	6 feet	3.50	3.00
50 feet	7 feet	5.00	4.20
60 feet	8 feet	6.60	5.50
75 feet	9 feet	8.20	6.90

COTTON SEINE NETTING

For Making Nets or Seines and Reamings. Netting only, not mounted with rope, leads or floats, and is sold by the pound. Any depth desired. 1-inch square mesh or larger. Made of best quality white seine twine. Cannot be returned if made to order. Allow from four to eight days to make and ship, and send cash with order.

No. 6H9727 1/2 Cotton Netting No. 12, soft or medium twine 1 inch square mesh or larger. Price, per pound, 40c.
No. 6H9728 1/2 Cotton Netting No. 16, soft twine, 1-inch square mesh or larger. Price, per pound, 38c.
Don't fail to state the depth and the size of mesh of netting wanted.

Superior Minnow and Creek Seines.



These Minnow Seines are hung complete with leads and floats, made in 3/8-inch, 1/2-inch and 5/8-inch square mesh. Prices on other lengths or depths quoted upon application. When ordering give catalog number, length, depth and size of mesh. Minnow seines with 3/8- and 1/2-inch mesh are made of No. 20 G twine. Minnow seines with 5/8-inch square mesh are made of No. 14-G twine. Carried in stock.

Catalog No.	Size Square Mesh	1/2-ft. 10 Feet	1-ft. 15 Feet	1 1/4-ft. 20 Feet	1 1/2-ft. 25 Feet	1 3/4-ft. 30 Feet
6H9740 1/2	3/8	\$0.75	\$1.13	\$1.50	\$1.95	\$2.35
6H9740 1/4	1/2	.91	1.38	1.96	2.40	2.80
6H9740 1/2	5/8	1.09	1.70	2.30	2.80	3.45
6H9746 1/2	3/8	1.28	1.91	2.53	3.15	3.88
6H9746 1/4	1/2	1.61	2.41	3.23	4.05	4.95
6H9746 1/2	5/8	1.96	2.94	3.93	5.00	6.60
6H9752 1/2	3/8	1.60	2.38	3.23	4.05	4.95
6H9752 1/4	1/2	2.00	2.98	3.93	4.95	5.95
6H9752 1/2	5/8	2.40	3.50	4.50	5.50	6.50

Minnow Netting.

Minnow Netting, made of cotton twine. The prices are for the netting only; not rigged with sinkers, floats or lines. Price is by the running yard, hung measure. Cannot be returned if sent as ordered.

Catalog No.	Size Square Mesh	Per Yard 4 Feet Deep	Per Yard 5 Feet Deep	Per Yard 6 Feet Deep
6H9755 1/2	3/8	4.3c	5.5c	6.4c
6H9755 1/4	1/2	5.3c	6.6c	7.5c
6H9755 1/2	5/8	6.4c	7.9c	8.9c

Improved Good Sense Minnow Seines. 3-16-inch Mesh.



The Good Sense Minnow Seines sold by us are far superior to the light flimsy nets sold by others and known as Good Sense Nets. One of our Good Sense Nets will outlast ten of the ordinary Common Sense Nets. Considering the quality of our nets and the low prices we ask, you cannot appreciate the wonderful values we are offering in our nets. We also claim our nets are better rigged than any sold elsewhere. These nets are all 4 feet deep. We can furnish in any other depth.

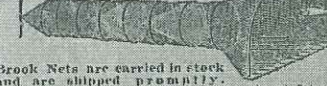
SHIPPED FROM STOCK.

Catalog No.	Length, Feet	Depth, Feet	Price	Shipping Weight
6H9758	4	4	\$0.24	28 ounces
6H9758	6	4	.38	28 ounces
6H9758	10	4	.63	28 ounces
6H9758	12	4	.74	14 ounces
6H9758	15	4	.95	28 ounces
6H9758	20	4	1.25	28 ounces
6H9758	25	4	1.55	28 ounces
6H9758	30	4	2.00	28 ounces

Good Sense Netting, 11 Cents.

PROMPTLY SHIPPED FROM STOCK. No. 6H9759 Improved Good Sense Netting only, 11 cent out floats, leads or lines, made only 4 feet deep, 3-16 inch mesh. We cannot furnish this any other depth. Shipping weight, 6 ounces Price, per yard.

Superior Brook and Creek Nets.



Brook Nets are carried in stock and are shipped promptly. The first or large hang is made 8' above to set flat on bottom of the stream. These nets are set in the stream require no wings. Will catch and hold all medium size. These nets weigh about 4 1/2 pounds.

Catalog No.	Style of Throat	Depth of Mouth	Length	Number of Hooks	Size of Frame	Front	Side	Mesh	Price
6H9760 1/2	Double	1 1/2	11	3	10-12	10-12	10-12	10-12	\$1.00
6H9761 1/2	Double	1 1/2	11	3	10-12	10-12	10-12	10-12	1.00
6H9762 1/2	Double	1 1/2	11	3	10-12	10-12	10-12	10-12	1.00
6H9763 1/2	Double	1 1/2	11	3	10-12	10-12	10-12	10-12	1.00



**THIS BOOK IS
FREE**

**80 Feet of Samples!
Prices Below Dealers' Costs**

Paper for a Whole Room for Less Than a Dollar!

Fill out the Coupon on the other side and mail this Post Card today

SEARS, ROEBUCK AND CO.

Place 2-cent stamp here and write your name and address in the space provided.

Post Card

PHILADELPHIA, PA.

Sears, Roebuck and Co.
ON THE WORLD'S LARGEST STORE

(OVER)

WRITE YOUR NAME AND ADDRESS HERE
Please Write Plainly

Send Me Your 1928 Wall Paper Sample Book 637X on the Date Checked

DATE JAN. FEB. MARCH

NAME _____

POSTOFFICE _____

STATE _____

RURAL ROUTE _____ BOX _____

Give Rural Route and Box Number if on a Rural Route

STREET ADDRESS _____ PH7635

Digitized by the Internet Archive
in 2010 with funding from
Lyrisis Members and Sloan Foundation

<http://www.archive.org/details/catalogno12400sear>